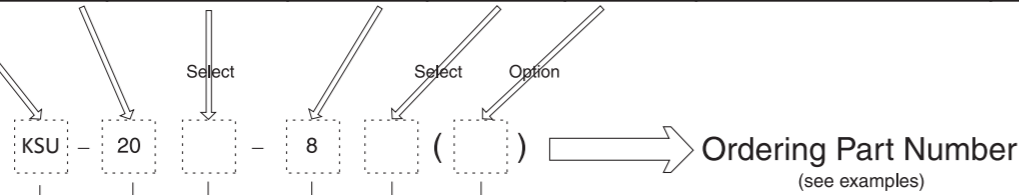




Part Numbering

| Series | Size | Body Type | No. of Contacts | Contact Type | Option PCB | Notes          | Page |
|--------|------|-----------|-----------------|--------------|------------|----------------|------|
| KSU    | 20   | SP        | 8               | P            |            | Plug           | 3    |
|        |      | P         |                 | S            |            | Plug           |      |
|        |      | SBR       |                 | S            | ●          | Receptacle     |      |
|        |      | BR        |                 | P            | ●          | Receptacle     |      |
|        |      | BRC       |                 |              |            | Receptacle Cap |      |
|        |      | SBRC      |                 |              |            | Receptacle Cap |      |



|                                |                            |
|--------------------------------|----------------------------|
| <b>Connector Series</b>        |                            |
| KSU20 Series                   |                            |
| <b>Body Type</b>               |                            |
| SP:                            | Plug                       |
| P :                            | Plug                       |
| SBR :                          | Receptacle                 |
| BR :                           | Receptacle                 |
| SBRC:                          | Receptacle cap (accessory) |
| BRC :                          | Receptacle cap (accessory) |
| <b>No. of Contacts</b>         |                            |
| 8                              |                            |
| <b>Contact Type</b>            |                            |
| P :                            | Pin                        |
| S :                            | Socket                     |
| Blank :                        | Receptacle cap             |
| <b>Option</b> (for receptacle) |                            |
| PCB :                          | PCB contact termination    |

Examples

- KSU - 20SP - 8P
- KSU series - Size 20 Plug - 8 contact Pin
- KSU - 20P - 8S
- KSU series - Size 20 Plug - 8 contact Socket
- KSU - 20SBR - 8S
- KSU series - Size 20 Receptacle - 8 contact Socket
- KSU - 20BR - 8P (PCB)
- KSU series - Size 20 Receptacle - 8 contact Pin (PCB termination)

Related Product



Features

- ✓ Safe connection / Easy mounting
- ✓ Antenna Interface Standards Group(ASIG) specification
- ✓ Electro Magnetic Protection
- ✓ Protection rating of IP67
- ✓ Compatible according to IEC 60130-9
- ✓ Electro Magnetic Protection

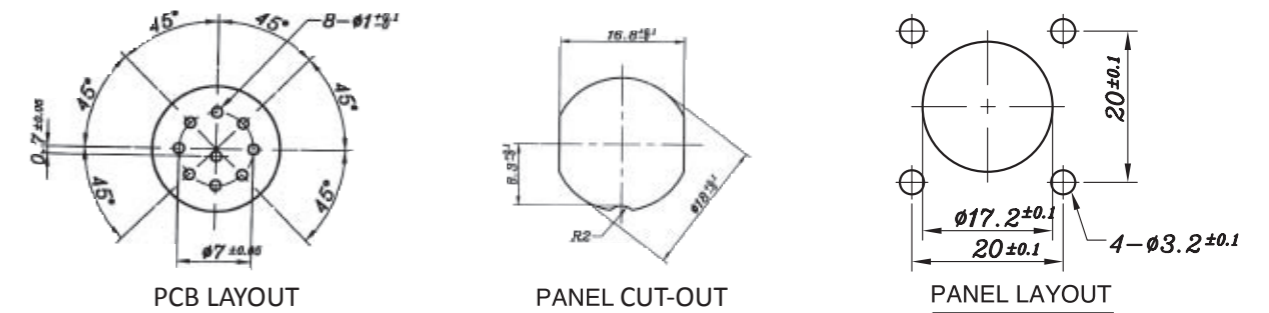
Application

- ✓ Electronic Precision Equipment
- ✓ Control Engineering
- ✓ Automation
- ✓ Medical

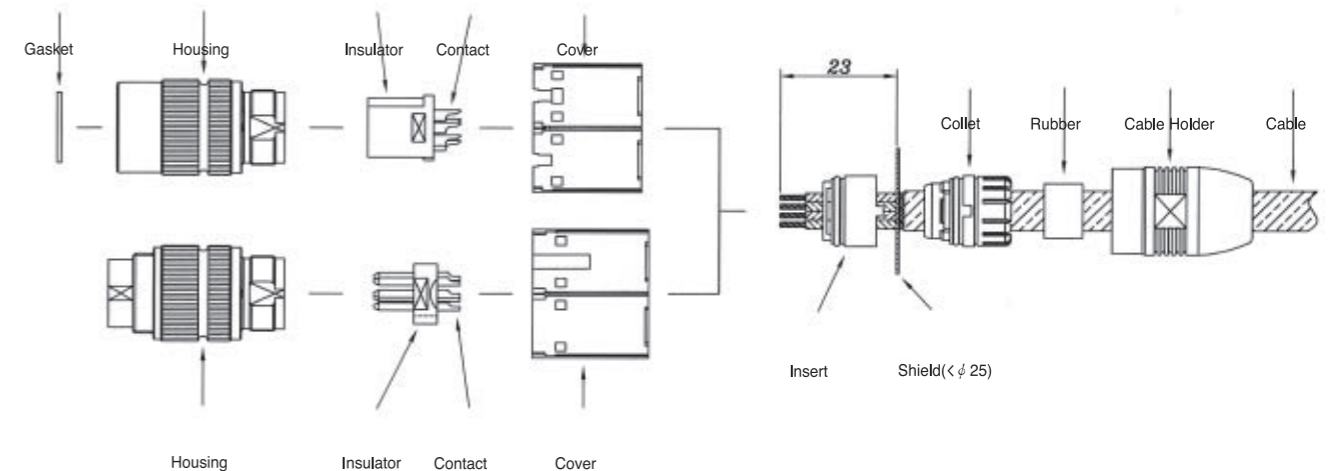
Material Used / Finish

|           |        | Material        | Finish         |
|-----------|--------|-----------------|----------------|
| Body      |        | ZnDc, Brass     | Sn, Ni Plating |
| Insulator |        | PA              | Black          |
| Contacts  | Pin    | Brass           | Gold Plating   |
|           | Socket | Phosphor bronze | Gold Plating   |

Recommended Layouts

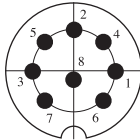


Wiring Process





**Contact Arrangement and Major Performance**

|                                    |   |
|------------------------------------|---|
| Contact Arrangement                |  |
| No. of Contacts                    | 8   |
| Temperature Range                  | - 40 °C / + 85 °C   |
| Protection                         | IP 67   |
| Rated Current                      | 5A  |
| Rated Voltage                      | 60V AC  |
| Withstanding Voltage <sup>1</sup>  | AC 1000V  |
| Insulation Resistance <sup>2</sup> | 1000MΩ  |
| Contact Resistance <sup>3</sup>    | ≤ 5mΩ   |

**NOTE**

1. Withstanding voltage is the tested voltage.
  2. Insulation resistance is measured at DC 100V.
  3. Contact resistance is measured at DC 1A.
- All values are subject to change without notice.  
For more information about drawing and testing data, please contact Syskim International.

**Accessories**

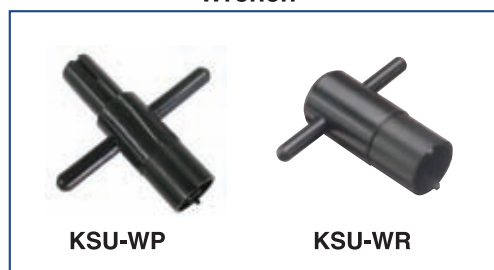
**Metal Cap**



**Plastic Cap**



**Wrench**



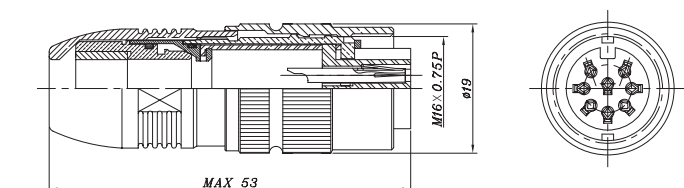
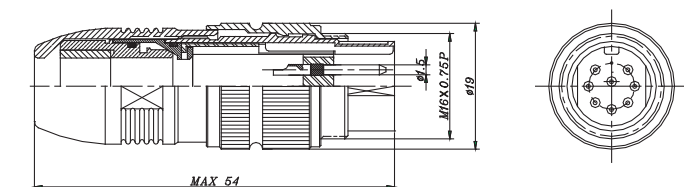
**KSU Plug**



KSU-20SP-8P



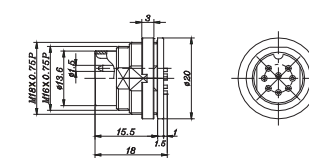
KSU-20P-8S



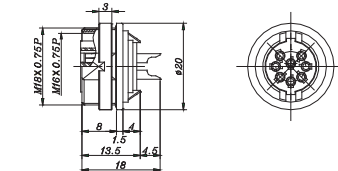
**KSU Receptacle**



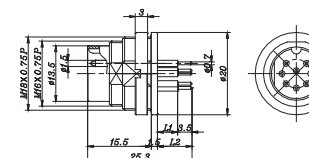
KSU-20BR-8P



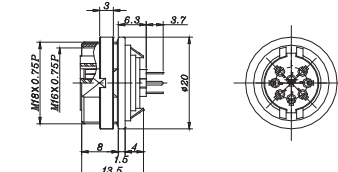
KSU-20SBR-8S



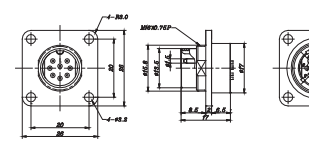
KSU-20BR-8P(PCB)



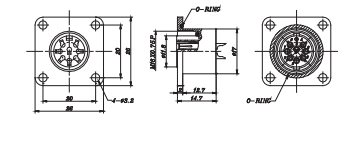
KSU-20SBR-8S(PCB)



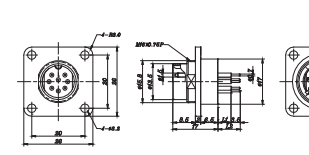
KSU-20PR-8P



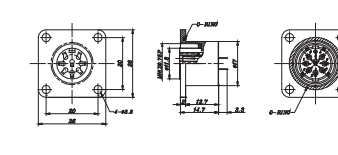
KSU-20SPR-8S



KSU-20PR-8P(PCB)



KSU-20SPR-8S(PCB)



Lengths of L<sub>1</sub> and L<sub>2</sub> can be changed according to customer request.

|                |                |
|----------------|----------------|
| L <sub>1</sub> | L <sub>2</sub> |
| 4.8            | 8.3            |